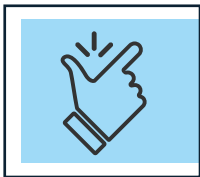


# ADVANCED, AROUND-THE CLOCK THREAT DETECTION

## A GUIDE TO SECURITY INFORMATION EVENT MANAGEMENT

SIEM, or security information and event management, is a smart, sophisticated security solution that identifies potential threats before they can harm your business. Through a combination of artificial intelligence, automation, expert analysis and more, a SIEM solution can detect that needle in a haystack when every second counts.



### SIEM SIMPLIFIED

We've leveraged industry standards like the NIST Cybersecurity Framework in building an effective SIEM solution that strengthens security controls and complies with regulatory standards.

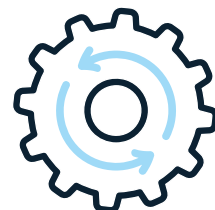


### COLLECT

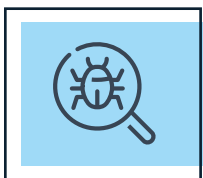
Continuous network monitoring collects millions of security events in one centralized location in real time. A SIEM solution offers a unique holistic visibility into your entire network including devices and cloud resources.

### DID YOU KNOW?

An effective SIEM solution includes regular updates to keep up with a rapidly changing threat landscape.

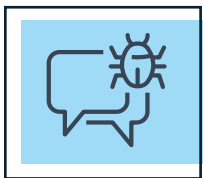


Update...



## DETECT

We apply pre-established, artificial intelligence rules (unique to your business) to the event logs in order to flag suspicious activity. Advanced analytics comb through events to determine which require immediate attention.



## RESPOND

Automated, instant notifications send verified threats to your expert support team for remediation. Response time is critical to reducing and/or eliminating security threats before they have a chance to escalate.



## SOLVE

A SIEM's centralized logs and enhanced, on-demand functionality provide the monitoring, analysis and reporting essential to meeting PCI DSS, HIPAA and CMMC industry compliance requirements.



## WE MAKE SIEM SIMPLE

We understand you may not be a security expert. Partner with security experts who make technology simple.